

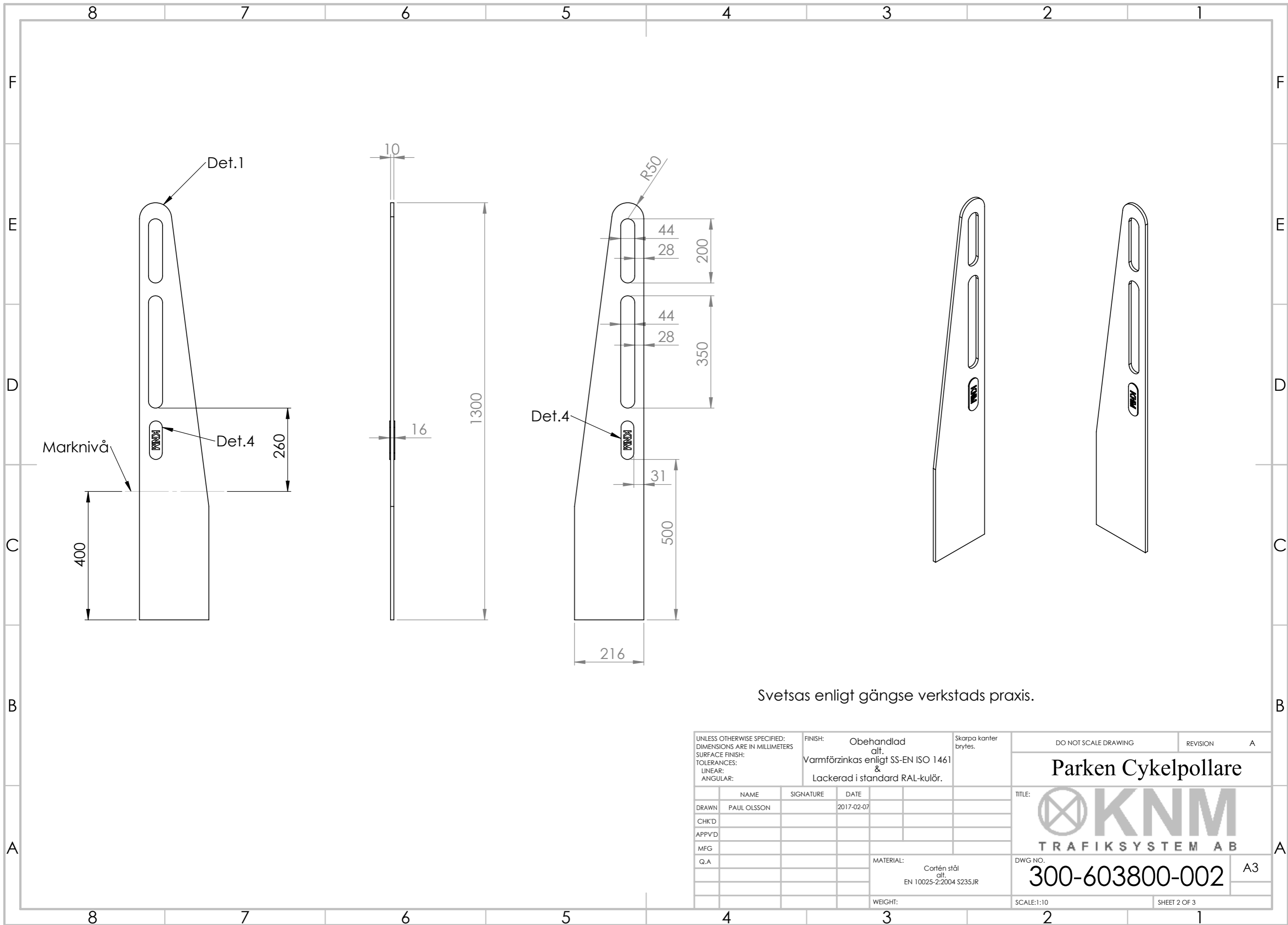




Svetsas enligt gängse verkstads praxis.

UNLESS OTHERWISE SPECIFIED: DIMENSIONS ARE IN MILLIMETERS		FINISH: Obehandlad alt. Varmföorzinkas enligt SS-EN ISO 1461 & Lackerad i standard RAL-kulör.		Skarpa kanter brytes	DO NOT SCALE DRAWING	REVISION	A
SURFACE FINISH:					<b>Parken Cykelpollare</b>  <b>TRAFIKSYSTEM AB</b>		
TOLERANCES:							
LINEAR:					TITLE:		
ANGULAR:					 <b>TRAFIKSYSTEM AB</b>		
DRAWN		NAME	SIGNATURE	DATE	DWG NO.		
CHK'D		PAUL OLSSON		2017-02-07	300-603800-001		
APPV'D					A3		
MFG					SCALE:1:10		
Q.A					SHEET 1 OF 3		
		MATERIAL:		Cortén stål alt. EN 10025-2:2004 S235JR			
		WEIGHT:					



Svetsas enligt gängse verkstads praxis.

UNLESS OTHERWISE SPECIFIED: DIMENSIONS ARE IN MILLIMETERS			FINISH: Obehandlad alt. Varmfö zincas enligt SS-EN ISO 1461 & Lackerad i standard RAL-kulör.		Skarpa kanter brytes.	DO NOT SCALE DRAWING	REVISION	A
SURFACE FINISH:						<b>Parken Cykelpollare</b>  <b>TRAFIKSYSTEM AB</b>		
TOLERANCES:								
LINEAR:						TITLE:		
ANGULAR:						 <b>TRAFIKSYSTEM AB</b>		
	NAME	SIGNATURE	DATE			DWG NO.		
DRAWN	PAUL OLSSON		2017-02-07			300-603800-002		
CHK'D						A3		
APPV'D						SCALE:1:10		
MFG					MATERIAL:	SHEET 2 OF 3		
Q.A					Cortén stål alt. EN 10025-2:2004 S235JR			
					WEIGHT:			